



Broad-Beam Industrial Ion Sources

Staff of Kaufman & Robinson, Inc.

ionsources.com
970.495.0187
1330 Blue Spruce Drive
Fort Collins, CO 80524

Introduction

A broad ion beam is typically several centimeters or more in diameter. The beam diameter is also much larger than the Debye length, which is the typical distance an electric field can penetrate into a plasma. If a broad beam is to be kept near ground potential, it must be neutralized (see Tech. Note KRI-02). For neutralization, there must be approximately equal numbers of electrons and positively charged ions in each volume of the ion beam. For a dielectric target, the electrons and ions must arrive in equal numbers. The target can be either a sputter target or a substrate. The ion energy in a broad ion beam is 2000 eV or less. (A singly charged ion “falling” through a potential difference of 2000 V acquires an energy of 2000 eV.) To minimize damage, the energy is usually 1000 eV or less. High energy implanting-type applications are not considered here. Concern about damage to processed surfaces has led to decreased ion energies. There are two general categories of broad-beam ion sources: gridded and gridless.

Gridded Ion Sources

A schematic for a gridded ion source is shown in Fig. 1, in which a dc discharge is depicted. The ions are generated by a discharge in either a circular or elongated discharge chamber. Several types of electron-emitting cathodes can be used. A hot-filament type is shown in Fig. 1. The ions can also be generated with a rf discharge, which requires no electron emitting cathode. The discharge chamber is maintained at a positive potential by the beam supply. The ions are accelerated through the apertures in the screen and accelerator grids, which are together called the ion optics.

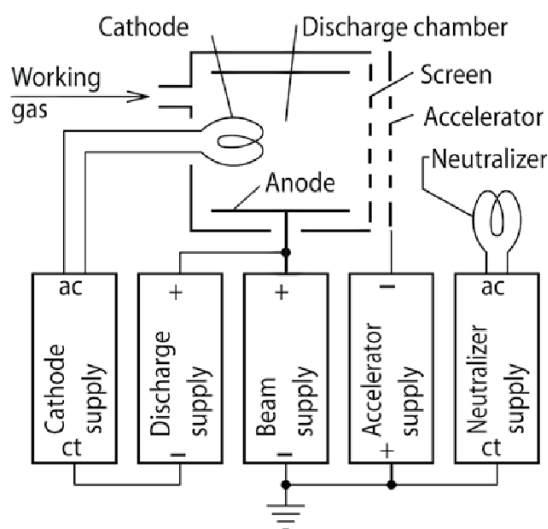


Fig. 1. Schematic diagram of a dc gridded ion source.

Different grid configurations can be used. The two-grid optics shown are most common. With a dc discharge, the screen grid is close to cathode potential. With a rf discharge, the screen is connected to the positive terminal of the beam supply. Positive ions are accelerated from the positive discharge chamber, through the ion optics, to reach a target at near-ground potential. The accelerator grid is negative of the surrounding vacuum chamber (at ground) to keep electrons from the neutralizer from going backwards through the ion optics. Assuming singly charged ions, which are appropriate for this type of ion source when properly operated, the ions gain an energy in eV (electron-volts) equal to the beam-supply voltage in V.

Gridded ion sources operate at background pressures of about 0.5 milli Torr or less. The ion-beam output depends on the ion-optics design. The beam current increases as the grids are spaced more closely and the number of apertures is increased. The ion beam can be focused to cover a small area, collimated, or defocused to cover a larger area, depending upon the shape of the grids and the relative locations of the apertures in the grids. For given ion optics, the ion-beam current, I_b , depends on the total potential difference between the grids, ΔV_t

$$I_b \propto \Delta V_t^{3/2} \quad (1)$$

Proportionality (1) shows that the ion-beam current decreases sharply at low voltages. It may appear that a large ion-beam current can be obtained at a low beam voltage by increasing the negative accelerator voltage. But a large negative voltage can result in the ion beam spreading out so much that the ion current arriving at the target is actually decreased. Three-grid optics can reduce the beam spread at large negative voltages, but with limited effectiveness and other compromises.



Regardless of the ion optics used, a gridded ion source cannot approach the ion-current capacity of a gridless end-Hall ion source at low ion energies. The ion optics that give the superior control of ion trajectories are also the most expensive part of a gridded ion source and require the most maintenance.

There are many types of gridless ion sources [2,3], but only the end-Hall and anode-layer are common in industry. The ions in a gridless source are generated by the discharge supply, with the accelerating potential difference produced by electrons from the cathode-neutralizer crossing magnetic-field lines (not shown) to reach the anode.

End-Hall Ion Source

An end-Hall ion source [2,4] is shown in Fig. 2. It has a discharge chamber that is circular or elongated. The acceleration of ions takes place in a quasineutral plasma, with approximately equal densities of electrons and ions. Consequently, there is no limitation on ion-beam current, I_b , as expressed in Proportionality (1). The ion beam equals about 20-30% of the discharge current and the mean ion energy corresponds to about 60-70% of the discharge voltage. An end-Hall ion source operates at a background pressure of about one milliTorr or less. Compared to a gridded ion source, it is reliable and rugged. It can generate large ion-beam currents at ion energies of 200 eV or less. It cannot easily generate higher ion energies and the ion-beam profile is limited to a divergent shape.

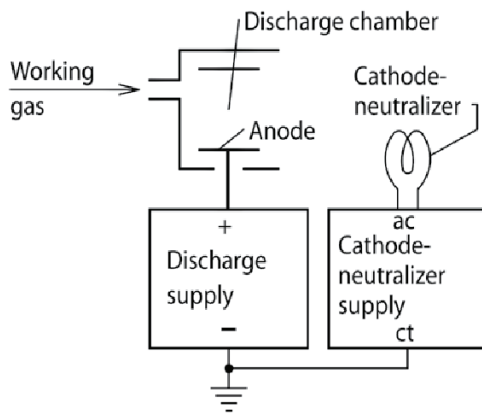


Fig. 2. Schematic diagram of an end-Hall ion source.

Anode-Layer Ion Source

An anode-layer ion source is shown in Fig. 3. It is also known as a closed-drift ion source, which refers to the electrons precessing in a closed path around the annular or racetrack shaped discharge chamber. The anode-layer is a type of closed-drift source in which most of the acceleration takes place in a thin layer near the anode [3]. There are also different modes of operation for this type of source. The anode-layer type used in industry operates in the vacuum mode, as shown by the absence of a cathode-neutralizer [3]. The discharge voltage ranges from about 800-2000 V. The ion energies are higher than for an end-Hall ion source. This type of ion source also operates at a background pressure of several milliTorr or less [5]. The ion beam potential must be elevated to obtain neutralizing electrons from the surroundings, thus exposing the target to high electric fields and, for dielectric targets, high potentials. Target damage can therefore be a concern. Coatings on, or warping of, the pole pieces and anode can degrade performance. However, if this type of source can perform an application in a satisfactory manner, it is a very simple type of ion source.

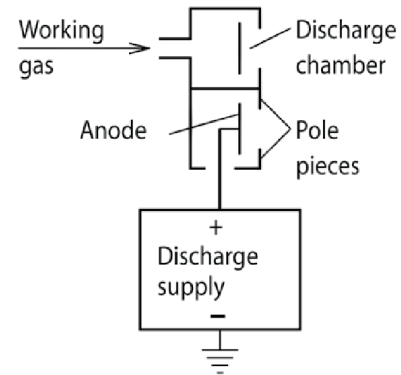


Fig. 3. Schematic diagram of anode-layer ion source.

References

1. H.R. Kaufman, "Technology of Ion Beam Sources Used in Sputtering," *J. of Vacuum Science and Technology*, Vol. 15, pp. 272-276, Mar./Apr. 1978.
2. H.R. Kaufman, R. S. Robinson, and R. I. Seddon, "End-Hall Ion Source," *J. of Vacuum Science and Technology A*, Vol. A5, pp. 2081-2084, July/Aug. 1987.
3. V.V. Zhurin, H.R. Kaufman, and R.S. Robinson, "Physics of Closed Drift Thrusters," (Review article) *Plasma Sources Sci. Technol.*, Vol. 8, pp. R1-R20, 1999.
4. H.R. Kaufman and R. S. Robinson, "End-Hall Ion Source," *U.S. Patent 4,862,032*, Aug. 29, 1989.
5. J.E. Keem, "High Current Density Anode Layer Ion Sources," pp. 388-393, *Proceedings SVC 44th Annual Technical Conference* (2001).